



# Genetic Polymorphisms of GSTM1 and GSTT1 Genes and Susceptibility to Acute Lymphoblastic Leukemia in the Yemeni Population

Radfan Saleh <sup>a,b</sup>, Hassan Hussein Musa <sup>a</sup>, Gamal Abdul Hamid <sup>c\*</sup>  
and Muzamil M. Abdel Hamid <sup>d</sup>

<sup>a</sup> Faculty of Medical Laboratory Science, University of Khartoum, Sudan.

<sup>b</sup> Faculty of Medical Laboratory Science, Taiz University, Yemen.

<sup>c</sup> Faculty of Medicine, Aden University, Yemen.

<sup>d</sup> Institute of Endemic Disease, University of Khartoum, Sudan.

## Authors' contributions

This work was carried out in collaboration among all authors. All authors read and approved the final manuscript.

## Article Information

### Open Peer Review History:

This journal follows the Advanced Open Peer Review policy. Identity of the Reviewers, Editor(s) and additional Reviewers, peer review comments, different versions of the manuscript, comments of the editors, etc are available here: <https://www.sdiarticle5.com/review-history/84848>

Original Research Article

Received 24 January 2022

Accepted 29 March 2022

Published 05 April 2022

## ABSTRACT

**Background:** GSTs (glutathione S-transferases) are enzymes that are well known for their capacity to detoxify hazardous substances. Previous research has found a link between GST polymorphisms and acute lymphoblastic leukaemia (ALL). The outcomes differed depending on the study and population.

**Objectives:** To analyze the relation between polymorphisms of glutathione s-transferase Mu (GSM1) and glutathione s-transferase theta (GSTT1) genes and susceptibility to acute lymphoblastic leukemia (ALL).

**Methods:** A total of 115 patients with ALL who attended oncology centers in Yemen and 140 unrelated apparently healthy individuals as the control group were recruited in this case-control study. DNA was extracted from EDTA venous blood samples and analyzed by Multiplex PCR for detection of the polymorphic deletion of the GSTT1 and GSTM1 genes.

**Results:** The GSTT1 null genotype were found to increase the risk of acute lymphoblastic leukemia, (OR=2.649, 95%CI=1.589-4.416,  $p=0.000$ ). The GSTM1 null genotype was not significant ( $p=0.076$ ), however is risk for ALL (OR=1.481, 0.902-2.431). The combination effects of

\*Corresponding author: E-mail: jamalalawi63@gmail.com;

GSTT1null and GSTM1null were associated with the susceptibility to acute lymphoblastic leukemia (OR 3.396, 95% CI 1.832-6.297) ( $p=0.000$ ).

**Conclusion:** Susceptibility to ALL appears to be significantly related to GSTT1 null polymorphism but not to GSTM1 polymorphism in Yemeni population.

**Keywords:** *GSTM1; GSTT1; Yemen; acute lymphoblastic leukemia; glutathione S-transferases; genetic polymorphism.*

## 1. INTRODUCTION

Leukemia is a type of blood cancer that develops when hematopoietic cells in the bone marrow (BM) undergo neoplastic transformation and clonal growth, resulting in a significant number of neoplastic cells in the peripheral blood [1-3].

The reactive species generated by carcinogens mediate this damage and this can be the result of oxidative metabolism or environmental mutagens [4]. S-transferase GSTs are second stage enzymes that stimulate the coupling of mutagens to glutathione, facilitating their solubility in water and excretion in urine [5]. Among these, are glutathione-S-transferase (GST) M1 and T1. These are involved in the detoxification and metabolism of reactive oxygen species, carcinogens and xenobiotics. Genetic variations in this enzyme family are found to be associated with high risk for development of some primary cancers and cancers secondary to chemotherapy [6,7].

In GSTM1 and GSTT1, the genes encoding the enzymes are polymorphic. Polymorphisms in GSTM1 and GSTT1 genes decrease the activity of the enzymes leading to elevated susceptibility to environmental toxins [7,8].

Methionine and Folate metabolism have important role in the synthesis of DNA and process of methylation. In the folate-dependent enzymes, the polymorphisms in the genes may influence cancer susceptibility [9,10].

Glutathione S-transferases (GSTs), consists of three super families: the cytosolic, mitochondrial, and microsomal also known as MAPEG proteins [11,12]. GSTM1 and GSTT1 genotype status with various malignant tumors such as smoke-induced lung cancer, breast, digestive or bladder cancer [13,14,15]. An increased risk for individuals with GST genotypes with decreased level of enzyme activity was observed in some studies [13-16]. GSTs can also confer resistance to cytotoxic agents used to treat cancer [17,18]. Unlike the role of GSTs in carcinogenesis in the environment, GST genotypes that result in low

enzyme activity can be beneficial for people undergoing chemotherapy for oncology because poor detoxification improves the effectiveness of chemotherapy.

The common drugs for anticancer like chlorambucil, cyclophosphamide, melphalan, and steroids are substrates for GSTs [18-19]. Indirect evidence has been found of the role of GSTs in modifying the effect of the drug by deactivating drug hydroperoxides or other reactive oxygen-containing types of doxorubicin, mitomycin C and cisplatin [20-21].

Exposure to exogenous and endogenous toxic substances can cause genetic changes and, therefore, increase cancer susceptibility [22]. Environmental toxic factors for cells and genetic toxicity (like ionising radiation) are claimed to increase the risk of causing cancers [23]. Xenobiotic metabolising (XME) enzymes are the first lines of defense against environmental carcinogens.

Several studies recently examine different genes polymorphism inside GSTs family and they found significance association between the polymorphism and cancer risk and prognosis of the disease [24-27]. Some authors recommend assays for such polymorphisms as investigative protocol in cancer patients [28].

The researchers tested the connection of GSTT1 and GSTM1 gene polymorphisms with susceptibility to acute lymphoblastic leukaemia in a sample of Yemeni people at cancer centres in Yemen (Taiz, Aden, and Hadramout). Specimens were examined at Aden's Alsadaqa teaching hospital. Sudan's University of Khartoum conducted a molecular experiment.

## 2. MATERIALS AND METHODS

### 2.1 Study Population

Patients diagnosed with ALL between 2015 and 2018 who visited oncology centres were recruited to participate in the trial after giving their informed consent. As controls, 140

seemingly healthy persons of similar age and gender were used.

## 2.2 DNA Extraction

From EDTA blood sampling, the DNA was extracted by using DNA purification kit (G-spin™ Total DNA extraction kit protocol Intron Biotechnology). DNA was quantified by nanodrop and stored at -20°C.

## 2.3 Genotyping of GSTT1 and GSTM1 Polymorphism

Multiplex polymerase chain reaction (conventional) was used for detection of the polymorphic deletion of the GSTT1 and GSTM1. Briefly, this consisted of applying the PCR in a volume of up to 20 µl, this includes 1 µl genomic DNA, 1µl each primer and 15 µl distilled water, ready to load master mix (Maxime TM premix kit (i-Taq). PCR reaction conditions included initial denature at 94°C for 3 minutes, taken after 30 cycles at 94°C for 30 seconds, 60.5°C for 30 seconds, 72°C for 50 minutes and final expansion at 72°C for 10 minutes.

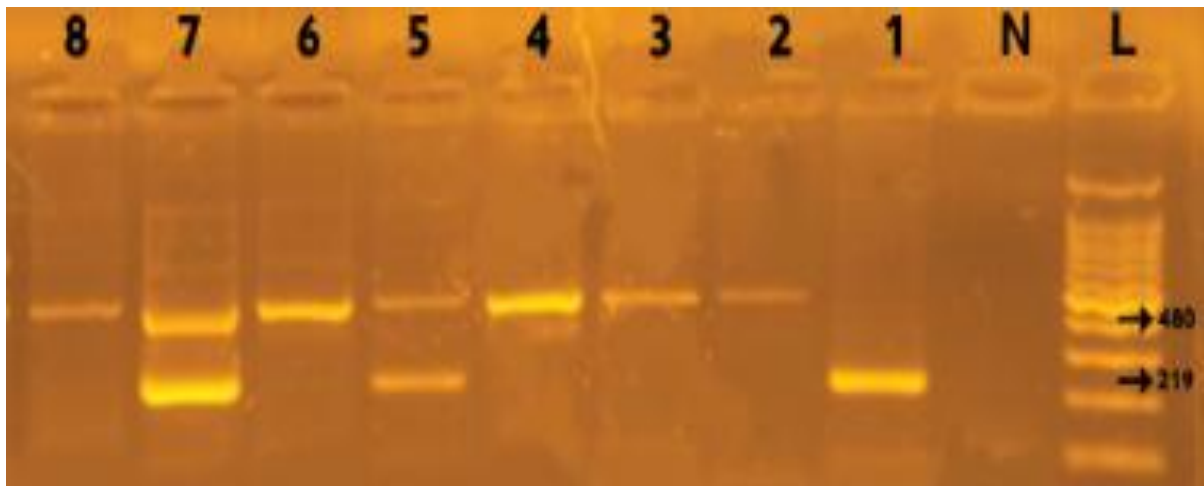
The products of PCR were analyzed on a 2% Agarose gel. After buffering and staining with 3

µl ethidium bromide the visualization was completed by gel documentation system. A 100 bp DNA ladder (*Vivantis 100 pb plus, 0.1 µg /µl*) was run with each batch of patients' and control samples. Genetic profiling (null genotypes) was demonstrated by not? using 480 bp separately for GSTT1 and 219 bp for GSTM1 PCR elements, using GSTP1 (436 bp) as a positive control.

This result of genotyping obtained does not distinguish between GST homozygote (+/+) and heterozygotes (+/-) (Fig. 1).

## 2.4 Statistical Analysis

Demographic data were analyzed to obtain the mean, the standard deviation and the probability (P value) between patients and control was introduced in to SPSS program (version 20), the analysis data tabulated in statistical tables and graphs. A P-value of ≤0.05 was considered statistically significant. Odd ratios were estimated for each variable. Logistic regression analysis to estimate the risk of developing ALL according to demographic data, with the 95% confidence limits.



**Fig. 1. Amplified DNA run in 2% agarose gel electrophoresis**

Lane L DNA ladder: MW 100-1500 bp fragments, lane1: 1 fragment at 219bp indicates the presence of GSTM1 only, lane5 and 7: 2 fragments at 219 bp and 480 bp indicates the presence of both GSTM1 and GSTT1, respectively. Lane 2,3,4,6 and 8: show 1 fragment at 480 bp indicates the presence of GSTT1 only and lane N: show the absence of both 219 bp and 480 bp indicate homozygous deletion of GSTT1 and GSTM1

### 3. RESULTS

Table 1 summarises the demographic distribution of the study groups. Patients were divided into four groups, ranging in age from one to sixty years. The majority of the patients were under the age of ten years, and the differences were statistically significant (P value =0.000). Whereas, gender, occupation and education were non significantly difference with P value 0.574, 0.844, 0.852 respectively. see (Table 1).

The GSTT1 null genotype in patient group was higher (55.7%) while in controls group (32.1%). Significant difference was found between the

distribution of genotype frequency among cases and controls (P=0.00). Risk of ALL by GSTT1 null genotype was statistically significant (OR=2.649, 95%CI=1.589-4.416, P=0.00). The difference between ALL patients and controls regarding GSTM1 null was not significant (p=0.076). However, the GSTM1 null genotype was risk for ALL (OR=1.481,0.902-2.431) (Table 2).

The GSTT1null /GSTM1 null genotype was significantly difference between ALL patients and control, it was 40(34.8%) in ALL patients and 19(13.6%) in controls {P value =0.000, odds ratio (OR) 3.396, 95% confidence interval (CI) 1.832-6.297 (Table 3).

**Table 1. Demographic variables of all patients and controls**

		<b>Patients (no =115)</b>	<b>Controls (no=140)</b>	<b>P value</b>
Age group	<10 year	70(60.9%)	30(21.4%)	0.000
	11-20 year	29(25.2%)	98(70%)	
	21-30 year	13(11.3%)	11(7.9%)	
	>30 year	3(2.6%)	1(.7%)	
Gender	Female	49(42.6%)	61(43.6%)	0.574
	Male	66(57.4%)	79(56.4%)	
Occupation	Without	110(95.7%)	128(91.4%)	0.844
	Farmer	2(1.7%)	0(0%)	
	Military	2(1.7%)	11(7.9%)	
	House ladies	1(.9%)	1(0.7%)	
Education	Illiterate	52(45.2%)	23(16.4%)	0.852
	Primary school	43(37.4%)	102(72.9%)	
	Secondary school	20(17.4%)	15(10.7%)	

**Table 2. GSTT1, GSTM1 genotypes in Yemeni acute lymphoblastic leukemic patients**

Gene	Genotype	Patients 115	Control group 140	P value	OR	95%CI	
						Lower	Upper
GSTT1	Null	64(55.7%)	45(32.1%)	0.00	2.649	1.589	4.416
	Present	51(44.3%)	95(67.9%)				
GSTM1	Null	63(54.8%)	63(45%)	0.076	1.481	0.902	2.431
	Present	52(45.2%)	77(55%)				

**Table 3. The combined effects of GSTT1 and GSTM1 null genotypes**

Gene	Patients 115	Control group 140	P value	OR	95% CI	
					Lower	Upper
GSTT1null /GSTM1 null	40(34.8%)	19(13.6%)	0.000	3.396	1.832	6.297

#### 4. DISCUSSION

Toxins, whether exogenous or endogenous, can cause gene changes that enhance vulnerability to cancer formation, such as ALL [29]. Important metabolising enzymes like GSTs are involved in the detoxification of xenobiotics or endogenous chemicals brought into the body [30,31]. Hence alterations in those enzyme may lead to absence of the enzymes like in GSTT1 and GSTM1 null Polymorphism [32,33]. Several studies examined different genes polymorphism inside GSTs family have been done on different types of cancer like ALL, however, the results are variable. For the GSTT1 gene, the zero? genotype (14.4% ALL and 8.5% controls) was not statistically significant for GSTT1gen [34]. Likewise, found no association between nullGSTM1, nullGSTT1 pattern frequencies and ALL in childhood [35]. Other study report there were no association between the risk of childhood ALL and the value of null GSTM1 and null GSTT1 genetics [36]. A study by Aydin - Sayitoglu et al. (2006) on the Turkish population showed there was no association between the recurrence of nullGSTM1 and the GSTT1 genotypes and the possibility of the development of ALL in childhood [37].

In contrast, Dunna et al. (2013) found the frequency increase significantly in the GSTM1-free genotype, the GSTT1-free genotype and the GST-free genotype (T null M null) in all cases compared to the controls [38]. In Egypt, null GSTT1 and GSTM1 genotypes was connected with the risk of developing ALL [39]. A stratification analysis showed there is association between acute childhood leukemia in the Asian group and the risk of a GSTM1 polymorphism (OR = 1.94; 95% CI, 1.53-2.46). Regarding the significant association between GSTT1 polymorphism and the risk of acute childhood leukemia was found in the Asian subgroup [40].

Several studies have looked at the effects of GSTs on the risk of developing some hematological malignancies. A few studies have linked the genetic differences in GST and risk of AML development. The relationship between risk of AML development and the GSTT1 and the null GSTM1 genotypes was reported by some studies in Caucasians and East Asia [41-43]. The relationship between the GSTM1null genotype and CLL risks was reported by Yuille et al. [44]. Several studies have reported the associated risk between null GSTM1 and NHL [45,46]. In another study by Kerridge et al., 2002 showed that the

nullGSTT1 genotype association with high risk of Non-Hodgkin's lymphoma [47]. Differences between these results can affect the relation between genetic polymorphism and risk of leukemia of these two conditions. The first is that the impacts of the GSTM1 and GSTT1 genotypes on genotypes vulnerability to leukemia development vary among the population. The second is that due to certain interactions between genes-genes and environment and genes. The null genotype free of enzymatic activity was reported in GSTM1gen in 38-62% of the Caucasians and the nullGSTT1 genotype was reported in the Caucasian population with a frequency of 27-73% [48].

Our study is the first to evaluate the association of these genes in Yemeni individuals. In our study we observed that the frequency of people with a GSTT1-null genotype was higher in ALL patients (55.7%) in comparison to control groups (32.1%). Significant difference was found between the genotype frequency distribution among cases and controls (P value =0.000). The risk of ALL by GSTT1 null genotype was statistically significant (OR=2.649, 95%CI=1.589-4.416). Similar results were indicated in north Indian studies done by Moulik et al. [49] (P value =0.0007) (OR=2.54, 95%CI=1.50-4.32), meta-analysis on 7 Asian studies (OR=1.63, 95%CI=1.32-1.99 and in Egypt by Swellam et al. [39] (P value =0.0001) (OR=0.523, 95%CI=0.9-1.07). In contrast the results were disagreed with many previous studies. In Turkish case-control study (P value =0.71) (OR=0.90, 95%CI=0.51-1.57) [27]. In Brazil, investigators found that the frequencies of null GSTT1 genotype were not related with the hazard of creating childhood ALL [36]. In expansion. Another study found an association of GSTM1 with childhood ALL, though there was no association with GSTT1 genotype [49]. Moreover no critical distinction was found between the ALL patients and the control group due to frequency of the GSTT1genotype (for the null genotype, in patients with ALL 19.2% and 25.5% for control group) [50].

These discrepancies can be attributed to the genetic susceptibility of developing ALL among the different populations and or due to the genotypic polymorphism with the environmental exposure to carcinogenic hazardous [27].

In this study, the GSTM1 null in patients with ALL and control group was not significant (p=0.076), although most of them found the null

genotype was more frequent in patients than in control 54.8% and 45%, respectively. However, the GSTM1 null genotype was risk for ALL in Yemeni individuals (OR=1.481, 0.902-2.431). But this result remains doubtful regarding most of studies, because most of them found that association were observed. Our results were agreed with Al-Eitan et al. [51] from Jordan (P value=0.57), Moulik et al. [49] in north India (P value=0.206) (OR=1.38, 95%CI=0.85-2.24), and (Canalle et al., 2004)from Brazil [36].

The combined effect of the GSTT1null /GSTM1 null was highly significant between patients with ALL and control 40(34.8%) in ALL patients and 19(13.6%) in controls {P value =0.000, odds ratio (OR) 3.396, 95% confidence interval (CI) 1.832-6.297} These results agreed with combined analysis of GSTP1 and GSTM1 (Ile/Val)/(Val/Val) genotype done by Suneetha et al. [52] showed increase risk for ALL patients significantly (OR=2.78: 95 CI=1.16-6.69) and there were direct association and proportion between GSTT1and GSTM1 null genotype and ALL [49].

## 5. CONCLUSIONS

This study analyzed the relation between polymorphisms of glutathione s-transferase Mu (GSM1) and glutathione s-transferase theta (GSTT1) genes and susceptibility to acute lymphoblastic leukemia (ALL) and concluded there is significant association between the GSTT1 null polymorphisms and ALL development in Yemen but the association with GSTM1 null genotype was not significant.

## CONSENT

As per international standard or university standard, patients' written consent has been collected and preserved by the author(s).

## ETHICAL APPROVAL

It is not applicable.

## COMPETING INTERESTS

Authors have declared that no competing interests exist.

## REFERENCES

1. Gamal Abdul Hamid. Acute leukemia. *Clinical Hematology*. 2013;2. DOI: 10.13140/RG.2.1.1477.1683.

2. Markert CL. Neoplasia: a disease of cell differentiation. *Cancer Research*. 1968;28: 1908-1914.
3. Johnson FB, Sinclair DA, Guarente L. Molecular biology of aging. *Cell*. 1999;96: 291-302.
4. Skibola CF, Smith MT, Hubbard A, Shane B, Roberts AC, Law GR, Rollinson S, Roman E, Cartwright RA, Morgan GJ. Polymorphisms in the thymidylate synthase and serine hydroxymethyltransferase genes and risk of adult acute lymphocytic leukemia. *Blood*. 2002;99:3786-3791.
5. Haranatha RP, Jamil K. Polymorphisms in the GST (M1 andT1) gene and their possible association with susceptibility to childhood acute lymphocytic leukemia in Indian population. *African Journal of Biotechnology*. 2006;5.
6. Allan JM, Wild CP, Rollinson S, Willett EV, Moorman AV, Dovey GJ, Roddam PL, Roman E, Cartwright RA, Morgan GJ. Polymorphism in glutathione S-transferase P1 is associated with susceptibility to chemotherapy-induced leukemia. *Proceedings of the National Academy of Sciences*. 2001;98:11592-11597.
7. Strange R, Fryer A. The glutathione S-transferases: Influence of polymorphism on cancer susceptibility. *IARC Scientific Publications*. 1999;231-249.
8. Autrup H. Genetic polymorphisms in human xenobiotica metabolizing enzymes as susceptibility factors in toxic response. *Mutation Research/Genetic Toxicology and Environmental Mutagenesis*. 2000;464:65-76.
9. Zingg JM, Jones PA. Genetic and epigenetic aspects of DNA methylation on genome expression, evolution, mutation and carcinogenesis. *Carcinogenesis*. 1997; 18:869-882.
10. Lucock M. Folic acid: nutritional biochemistry, molecular biology, and role in disease processes. *Molecular Genetics and Metabolism*. 2000;71:121-138.
11. Sheehan D, Meade G, Foley VM. Structure, function and evolution of glutathione transferases: Implications for classification of non-mammalian members of an ancient enzyme superfamily. *Biochemical Journal*. 2001;360:1-16.
12. Allocati N, Federici L, Masulli M, Di Ilio C. Glutathione transferases in bacteria. *The FEBS Journal*. 2009;276:58-75.

13. Deakin M, Elder J, Hendrickse C, Peckham D, Leopard D, Bell DA, Jones P, Duncan H, Brannigan K, Aldersea J. Glutathione S-transferase GSTT1 genotypes and susceptibility to cancer: studies of interactions with GSTM1 in lung, oral, gastric and colorectal cancers; 1996.
14. Harries LW, Stubbins MJ, Forman D, Howard G, Wolf CR. Identification of genetic polymorphisms at the glutathione S-transferase Pi locus and association with susceptibility to bladder, testicular and prostate cancer. *Carcinogenesis*. 1997;18: 641-644.
15. Seidegård J, Pero RW, Markowitz MM, Roush G, Miller DG, Beattie EJ. Isoenzyme (s) of glutathione transferase (class Mu) as a marker for the susceptibility to lung cancer: a follow up study. *Carcinogenesis*. 1990;11:33-36.
16. Helzlsouer KJ, Huang HY, Hoffman S, Alberg AJ, Comstock GW, Strickland PT, Selmin O, Watson M, Bell D. Association between glutathione S-transferase M1, P1, and T1 genetic polymorphisms and development of breast cancer. *JNCI: Journal of the National Cancer Institute*. 1998;90:512-518.
17. Iyer L, Ratain M. Pharmacogenetics and cancer chemotherapy. *European Journal of Cancer*. 1998;34:1493-1499.
18. Tew KD. Glutathione-associated enzymes in anticancer drug resistance. *Cancer Research*. 1994;54:4313-4320.
19. Yuan Z, Smith P, Brundrett R, Colvin M, Fenselau C. Glutathione conjugation with phosphoramidate mustard and cyclophosphamide. A mechanistic study using tandem mass spectrometry. *Drug Metabolism and Disposition*, 1991;19:625-629.
20. Black SM, Beggs J, Hayes J, Bartoszek A, Muramatsu M, Sakai M, Wolf C. Expression of human glutathione S-transferases in *Saccharomyces cerevisiae* confers resistance to the anticancer drugs adriamycin and chlorambucil. *Biochemical Journal*. 1990;268:309-315.
21. Nakagawa K, Saijo N, Tsuchida S, Sakai M, Tsunokawa Y, Yokota J, et al. Glutathione-S-transferase pi as a determinant of drug resistance in transfectant cell lines. *Journal of Biological Chemistry*. 1990;265:4296-4301.
22. Valko M, Rhodes C, Moncol J, Izakovic M, Mazur M. Free radicals, metals and antioxidants in oxidative stress-induced cancer. *Chemico-Biological Interactions*. 2006;160:1-40.
23. Lightfoot TJ, Roman E. Causes of childhood leukaemia and lymphoma. *Toxicology and Applied Pharmacology*. 2004;199:104-117.
24. Anderer G, Schrappe M, Brechlin AM, Lauten M, Muti P, Welte K, Stanulla M. Polymorphisms within glutathione S-transferase genes and initial response to glucocorticoids in childhood acute lymphoblastic leukaemia. *Pharmacogenetics and Genomics*. 2000; 10:715-726.
25. Chen CL, Liu Q, Pui CH, Rivera GK, Sandlund JT, Ribeiro R, et al. Higher frequency of glutathione S-transferase deletions in black children with acute lymphoblastic leukemia. *Blood*. 1997;89: 1701-1707.
26. Stanulla M, Schrappe M, Brechlin AM, Zimmermann M, Welte K. Polymorphisms within glutathione S-transferase genes (GSTM1, GSTT1, GSTP1) and risk of relapse in childhood B-cell precursor acute lymphoblastic leukemia: a case-control study. *Blood*. 2000;95:1222-1228.
27. Guven M, Unal S, Erhan D, Ozdemir N, Baris S, Celkan T, et al. Role of glutathione S-transferase M1, T1 and P1 gene polymorphisms in childhood acute lymphoblastic leukemia susceptibility in a Turkish population. *Meta Gene*. 2015;5: 115-119
28. Cheek MH, Evans WE. Acute lymphoblastic leukaemia: a model for the pharmacogenomics of cancer therapy. *Nature Reviews Cancer*. 2006;6:117-129.
29. Wogan GN, Hecht SS, Felton JS, Conney AH, Loeb LA. Environmental and chemical carcinogenesis. *Seminars in Cancer Biology*. Elsevier. 2004;473-486.
30. Ketterer B. Protective role of glutathione and glutathione transferases in mutagenesis and carcinogenesis. *Mutation Research/Fundamental and Molecular Mechanisms of Mutagenesis*. 1988;202: 343-361.
31. Hengstler J, Arand M, Herrero M, Oesch F. Polymorphisms of N-acetyltransferases, glutathione S-transferases, microsomal epoxide hydrolase and sulfotransferases: influence on cancer susceptibility. *Genes and Environment in Cancer*. Springer; 1998.
32. Zhong SL, Zhou SF, Chen X, Chan SY, Chan E, Ng KY, Duan W, Huang M.

- Relationship between genotype and enzyme activity of glutathione S-transferases M1 and P1 in Chinese. *European Journal of Pharmaceutical Sciences*. 2006;28:77-85.
33. Lo HW, Ali-Osman F. Genetic polymorphism and function of glutathione S-transferases in tumor drug resistance. *Current Opinion in Pharmacology*, 2007;7: 367-374.
  34. Joseph T, Kusumakumary P, Chacko P, Abraham A, Radhakrishna Pillai M. Genetic polymorphism of CYP1A1, CYP2D6, GSTM1 and GSTT1 and susceptibility to acute lymphoblastic leukaemia in Indian children. *Pediatric Blood & Cancer*. 2004;43:560-567.
  35. Davies SM, Bhatia S, Ross JA, Kiffmeyer WR, Gaynon PS, et al. Glutathione S-transferase genotypes, genetic susceptibility, and outcome of therapy in childhood acute lymphoblastic leukemia. *Blood*. 2002;100:67-71.
  36. Canalle R, Burim RV, Tone LG, Takahashi CS. Genetic polymorphisms and susceptibility to childhood acute lymphoblastic leukemia. *Environmental and Molecular Mutagenesis*. 2004;43:100-109.
  37. Aydin-Sayitoglu M, Hatirnaz O, Erensoy N, Ozbek U. Role of CYP2D6, CYP1A1, CYP2E1, GSTT1, and GSTM1 genes in the susceptibility to acute leukemias. *American Journal of Hematology*. 2006;81: 162-170.
  38. Dunna NR, Vure S, Sailaja K, Surekha D, Raghunadharao D, Rajappa S, Vishnupriya S. Deletion of GSTM1 and T1 genes as a risk factor for development of acute leukemia. *Asian Pac J Cancer Prev*. 2013;14:2221-4.
  39. Swellam M, Mahmoud MS, Mosa TE, Mohamed AK. Influences of Glutathione S-Transferase Gene (GSTT1, GSTM1) Polymorphisms in Acute Lymphoblastic Leukemia. *International Journal of Current Pharmaceutical Review and Research*. 2016;7:229-232.
  40. Tang Q, Li J, Zhang S, Yuan B, Sun H, Wu D, Lu C, et al. GSTM1 and GSTT1 null polymorphisms and childhood acute leukemia risk: evidence from 26 case-control studies. *PLoS One*. 2013;8:e78810.
  41. Rollinson S, Roddam P, Kane E, Roman E, Cartwright R, Jack A, Morgan GJ. Polymorphic variation within the glutathione S-transferase genes and risk of adult acute leukaemia. *Carcinogenesis*. 2000;21:43-47.
  42. Lemos M, Cabrita F, Silva H, Vivan M, Placido F, Regateiro F. Genetic polymorphism of CYP2D6, GSTM1 and NAT2 and susceptibility to haematological neoplasias. *Carcinogenesis*. 1999;20: 1225-1229.
  43. He HR, You HS, Sun JY, Hu SS, Ma Y, Dong YL, Lu J. Glutathione S-transferase gene polymorphisms and susceptibility to acute myeloid leukemia: meta-analyses. *Japanese Journal of Clinical Oncology*. 2014;44:1070-1081.
  44. Yuille M, Condie A, Hudson C, Kote-Jarai Z, Stone E, Eeles R, Matutes E, et al. Relationship between glutathione S-transferase M1, T1, and P1 polymorphisms and chronic lymphocytic leukemia. *Blood*. 2002; 99:4216-4218.
  45. Gra OA, Glotov AS, Nikitin EA, Glotov OS, Kuznetsova VE, Chudinov AV, Sudarikov AB, Nasedkina TV. Polymorphisms in xenobiotic-metabolizing genes and the risk of chronic lymphocytic leukemia and non-Hodgkin's lymphoma in adult Russian patients. *American Journal of Hematology*. 2008b;83:279-287.
  46. Dieckvoss BO, Stanulla M, Schrappe M, Beier R, Zimmermann M, Welte K, Reiter A. Polymorphisms within glutathione S-transferase genes in pediatric non-Hodgkin's lymphoma. *Haematologica*. 2002;87:709-713.
  47. Kerridge I, Lincz L, Scorgie F, Hickey D, Granter N, Spencer A. Association between xenobiotic gene polymorphisms and non-Hodgkin's lymphoma risk. *British Journal of Haematology*. 2002;118:477-481.
  48. Magno LAV, Talbot J, Talbot T, Santos AMB, Souza RP, Marin LJ, et al. Glutathione s-transferase variants in a Brazilian population. *Pharmacology*. 2009; 83:231-236.
  49. Moulik NR, Parveen F, Kumar A, Agrawal S. Glutathione-S-transferase polymorphism and acute lymphoblastic leukemia (ALL) in north Indian children: a case-control study and meta-analysis. *Journal of Human Genetics*. 2014;59:529.
  50. Alves S, Amorim A, Ferreira F, Norton L, Prata M. The GSTM1 and GSTT1 genetic polymorphisms and susceptibility to acute lymphoblastic leukemia in children from north Portugal. *Leukemia*. 2002;16:1565-1568.



51. Al-Eitan LN, Rababa'h DM, Alkhatib RQ, Khasawneh RH, Aljarrah OA. GSTM1 and GSTP1 Genetic Polymorphisms and Their Associations With Acute Lymphoblastic Leukemia Susceptibility in a Jordanian Population. *Journal of Pediatric Hematology / Oncology*. 2016;38:e223-e229
52. Suneetha K, Nancy KN, Rajalekshmy K, Sagar T, Rajkumar T. Role of GSTM1 (Present/Null) and GSTP1 (Ile105Val) polymorphisms in susceptibility to acute lymphoblastic leukemia among the South Indian population. *Asian Pac J Cancer Prev*. 2008;9:733-736.

© 2022 Saleh et al.; This is an Open Access article distributed under the terms of the Creative Commons Attribution License (<http://creativecommons.org/licenses/by/4.0>), which permits unrestricted use, distribution, and reproduction in any medium, provided the original work is properly cited.

*Peer-review history:*

*The peer review history for this paper can be accessed here:*  
<https://www.sdiarticle5.com/review-history/84848>